



REYONA

CONCEPTION • RAYONNAGE • AGENCEMENT • INSTALLATION



INDUSTRIAL SHELVING



REYONA

WHO WE ARE ?

REYONA has excelled in the design and installation of shelving and storage systems for various retail sectors.

REYONA is the result of extensive experience in the manufacturing of metal shelving and wooden fittings. To achieve this, REYONA has two factories:

ARTILASER: Equipped with extensive expertise in the production of shelving as well as the design and execution of specific fittings.

RBS: Specializes in the manufacturing of industrial shelving.

CLIENT REQUEST PROCESS



Our values-listening, commitment, and dynamism-have enabled us to cross the borders of Tunisia and reach other markets around the world.

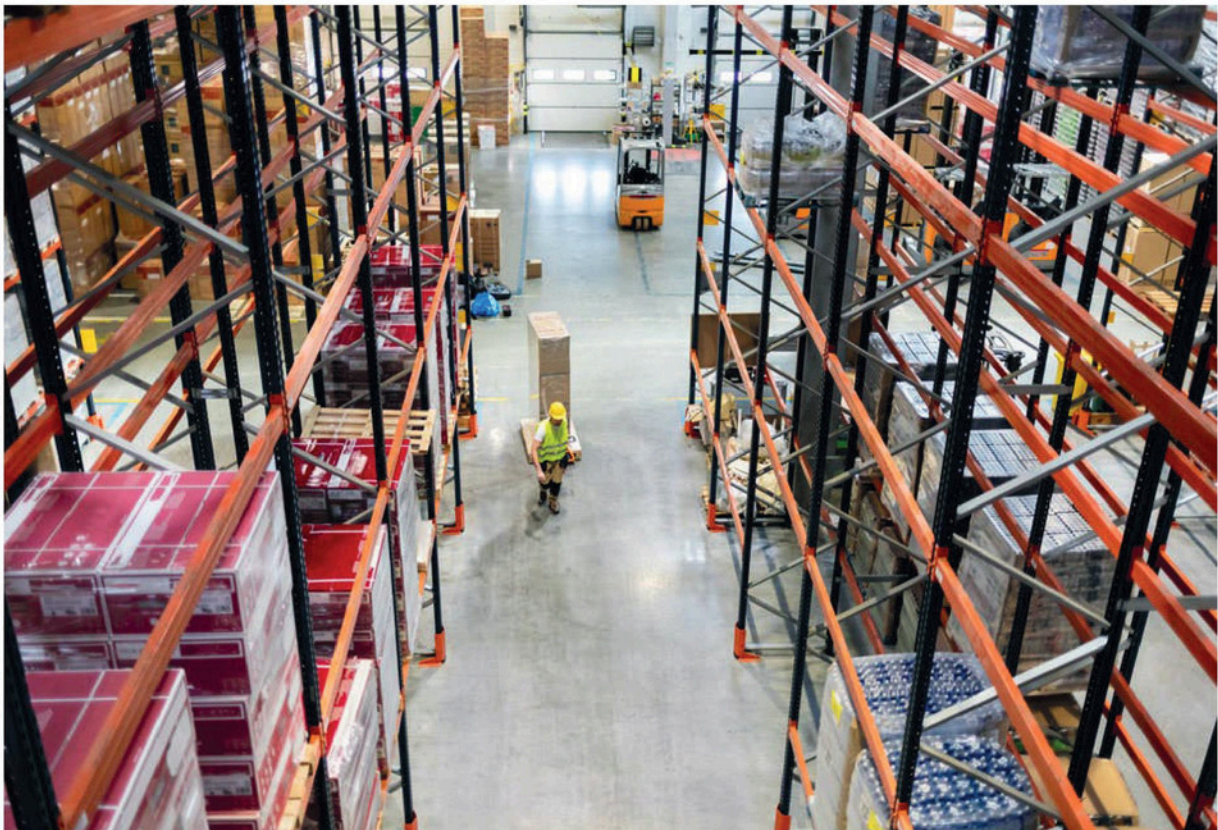




HEAVY-DUTY & MEDIUM-DUTY SHELVING

Advantages:

- Easy and quick installation, extensibility, and the ability to reposition and relocate installations.
- Optimization of storage space.
- Durability of the installation through surface treatment (galvanization, epoxy painting).
- Organization of product stocks for better visibility, leading to reduced storage costs by avoiding stockouts, excess inventory, and product losses.
- Safety for personnel and products through optimized weight and careful selection of storage materials and accessories.



MEDIUM-DUTY SHELVING

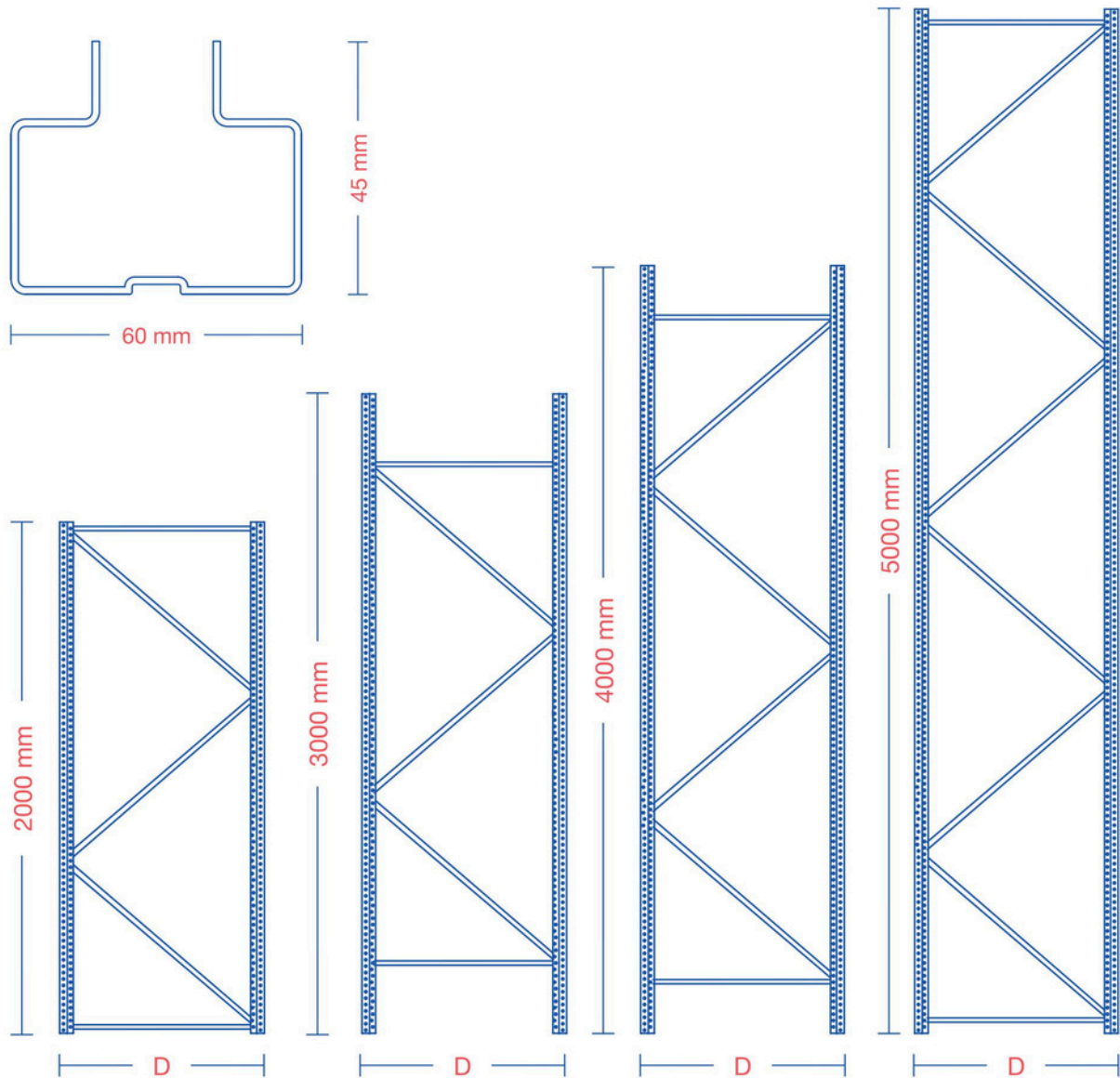
Medium-duty shelving is a key element in modern logistics, providing an effective and flexible solution for inventory management in warehouses of various sizes.

The medium-duty shelving system easily adapts to changes in customer demands and the types of products stored.

Adjustable shelves and customizable configurations are essential aspects to ensure the system's flexibility and adaptability to changes.



TYPES OF FRAMES

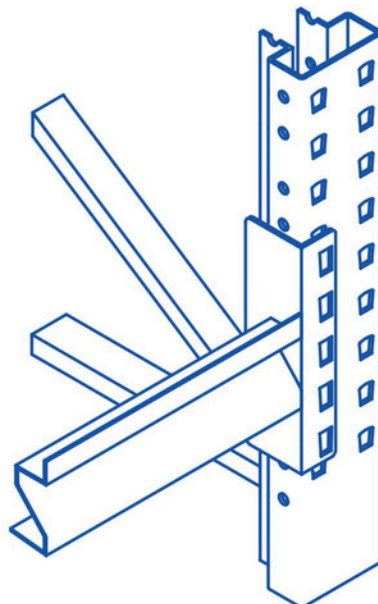


DEPTH	HEIGHT FRAME			
600 mm	2000 mm	3000 mm	4000 mm	5000 mm
800 mm	2000 mm	3000 mm	4000 mm	5000 mm

TYPES OF BEAMS

Z BEAM

80 X 30 x 2 mm
80 X 30 x 1,5 mm



LOADING CAPACITY PER SHELF (2 BEAMS) (KG)

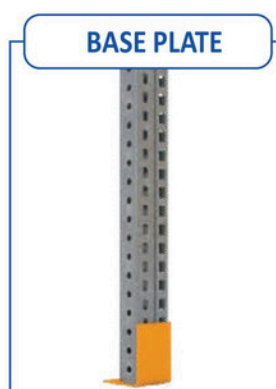
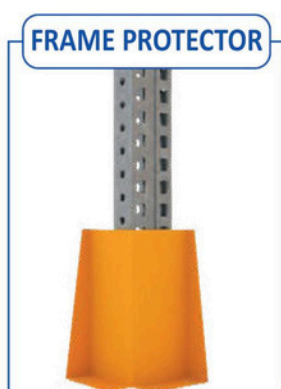
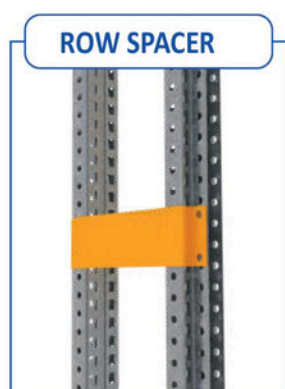
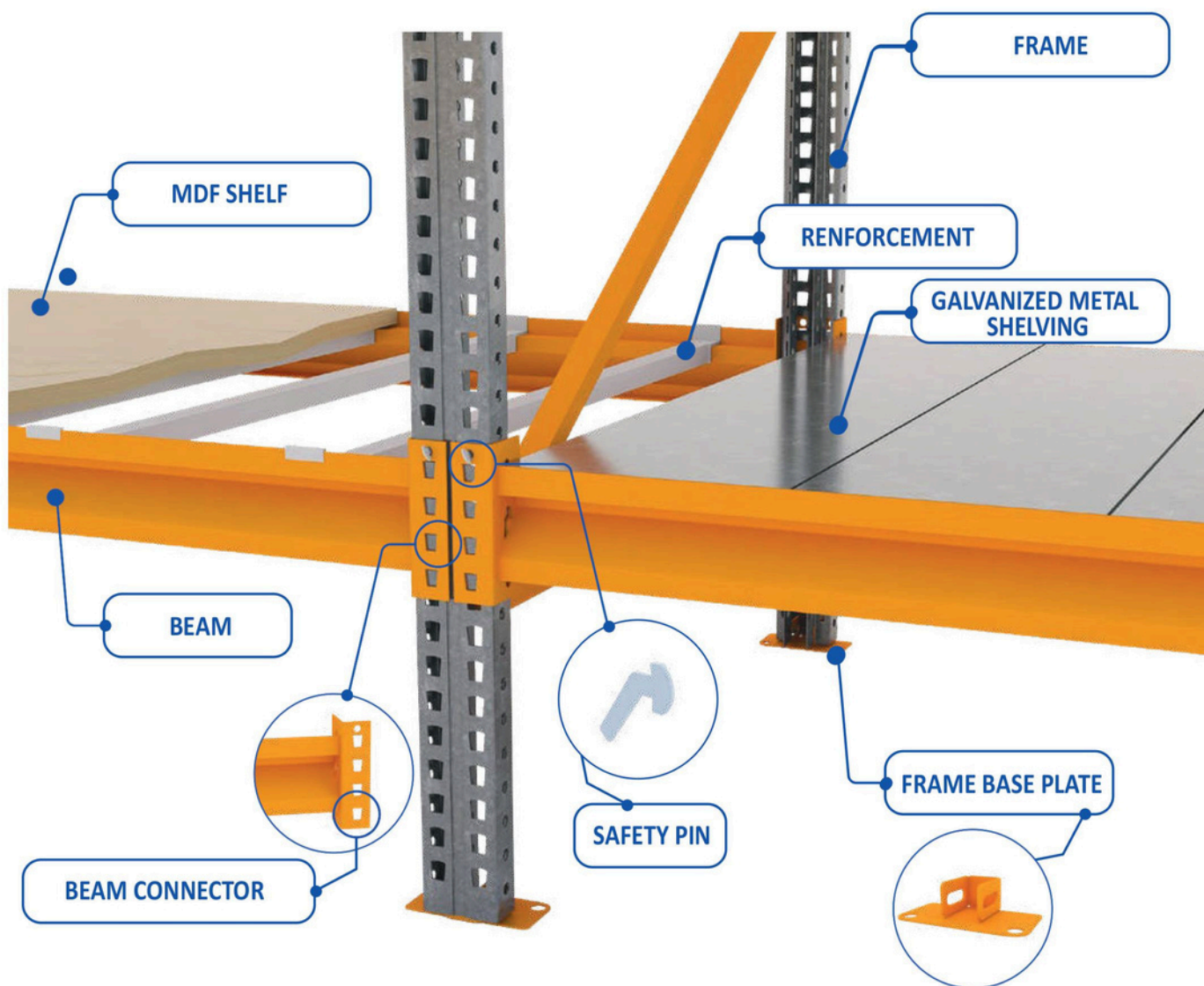
The following table displays a set of sheets according to the designated weight for each floor. Selecting the sheets is crucial for the safety of the installation.

Useful span between two FRAMES (mm)	Types Of Beams	
	Z BEAM 80 X 30 x 2 mm	Z BEAM 80 x 30 x 1,5 mm
1200	550	450
1800	450	350

TYPES OF ACCESSORIES



To complete the installation of your shelving, various essential accessories are available:



TYPES OF SHELVES

A selection of shelves is available based on the product and its weight to be placed on the shelf, optimizing installation costs.

You can choose pallets or shelves based on the product that will be placed on the shelf and its weight.

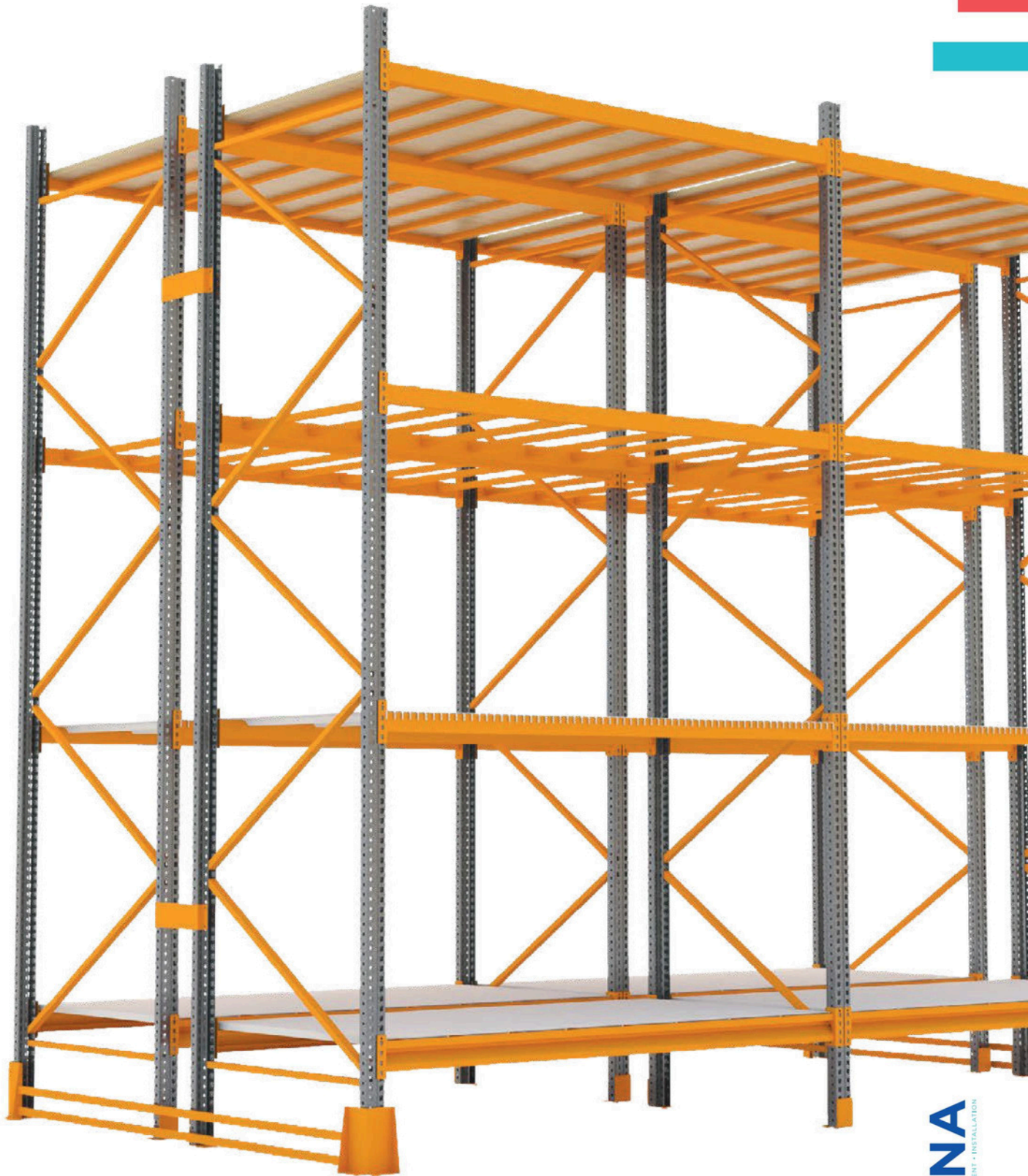


Laminate MDF

Mesh metal

Galvanized metal











HEAVY DUTY SHELVING



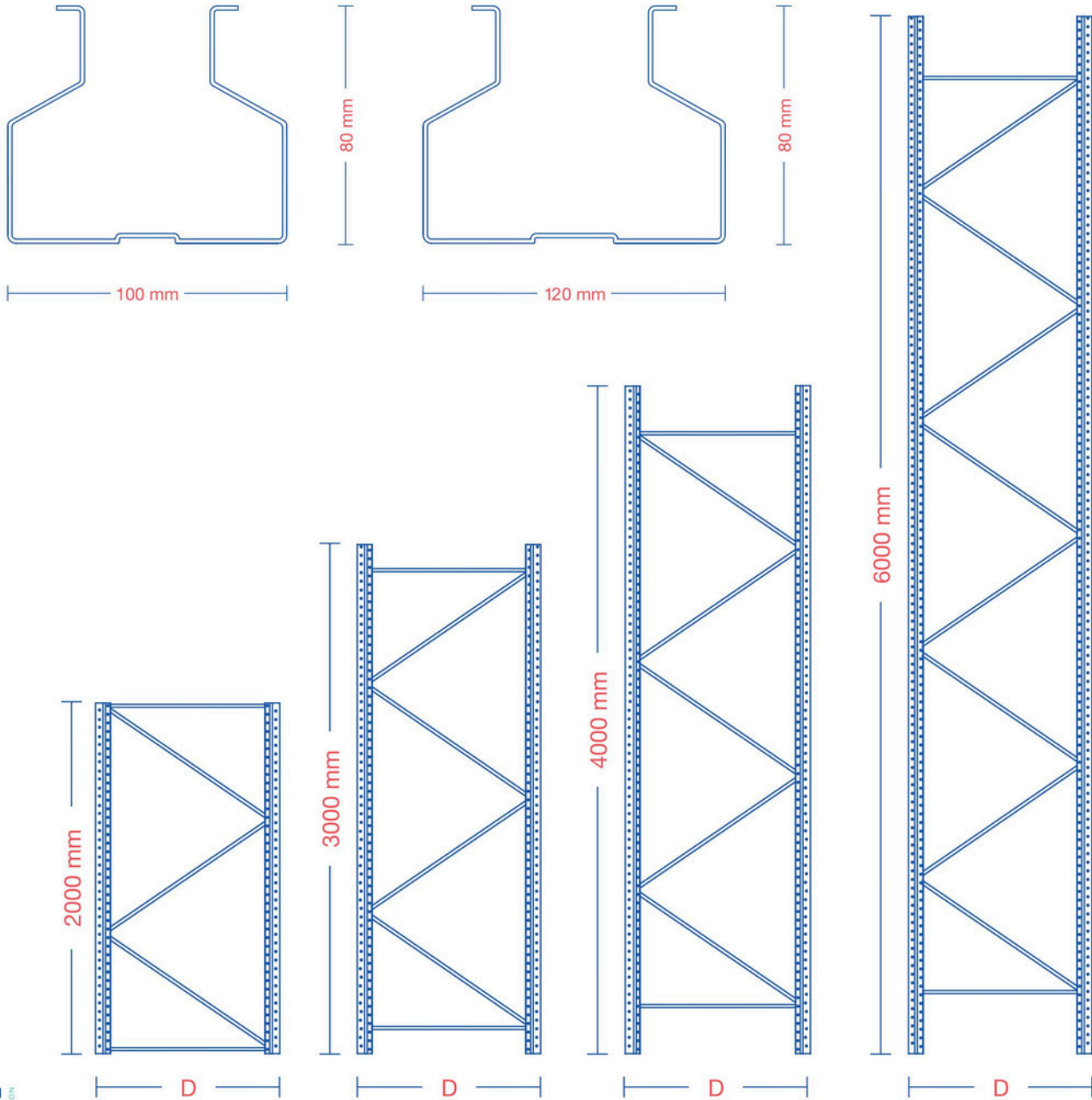
HEAVY DUTY SHELVING COMPONENTS





- ① FRAME
- ② DIAGONAL
- ③ BEAM CC
80 x 50 cm
100 x 50 cm
120 x 50 cm
140 x 50 cm
160 x 50 cm
- ④ ROW SPACER
- ⑤ PROTECTOR CONNECTOR
- ⑥ FRAME PROTECTOR
- ⑦ CENTRAL FRAME PROTECTOR
- ⑧ HEAVY DUTY BASE PLATES

TYPES OF FRAMES

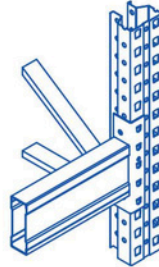


DEPTH	HEIGHT
1050 mm	de 2000 mm à 12000 mm

TYPES OF BEAMS

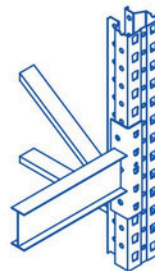
CC BEAM

80 x 50 x 1,5 mm
100 x 50 x 1,5 mm
140 x 50 x 1,5 mm
160 x 50 x 1,5 mm

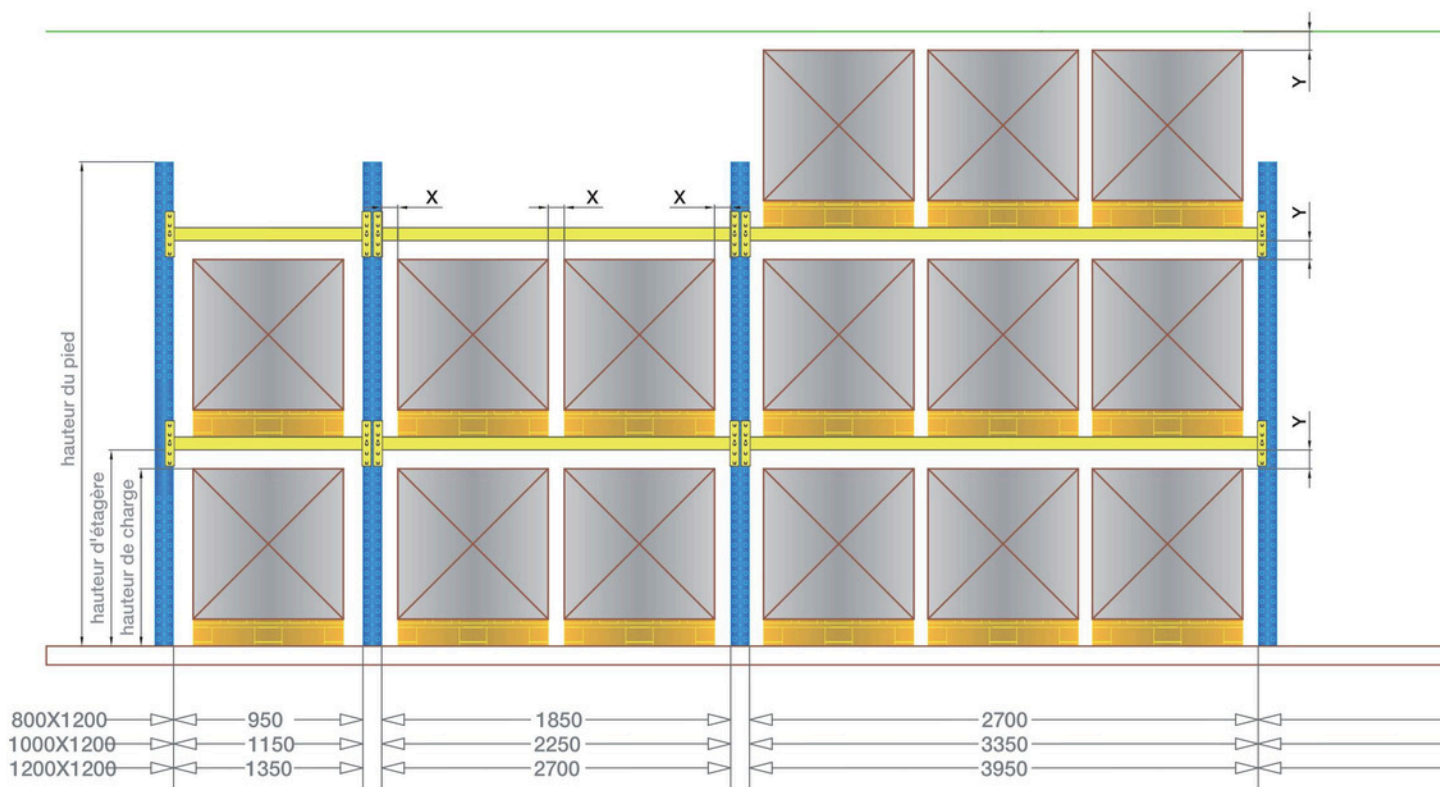


IPN 100

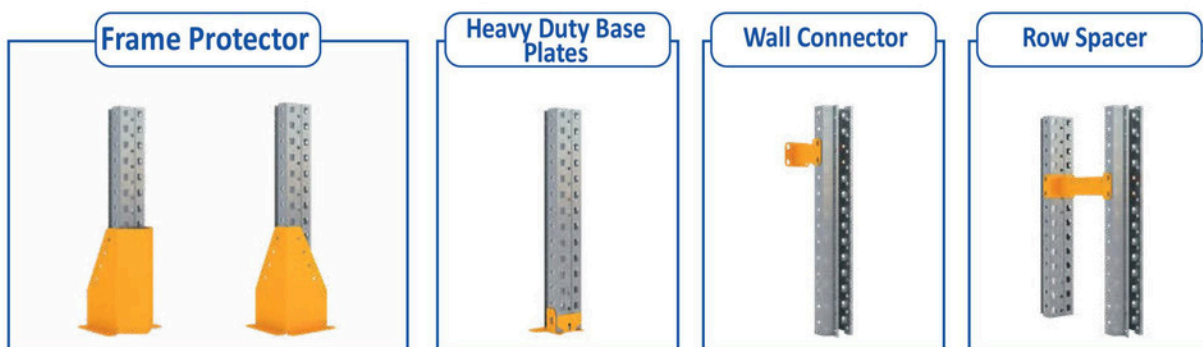
100 X 40 mm

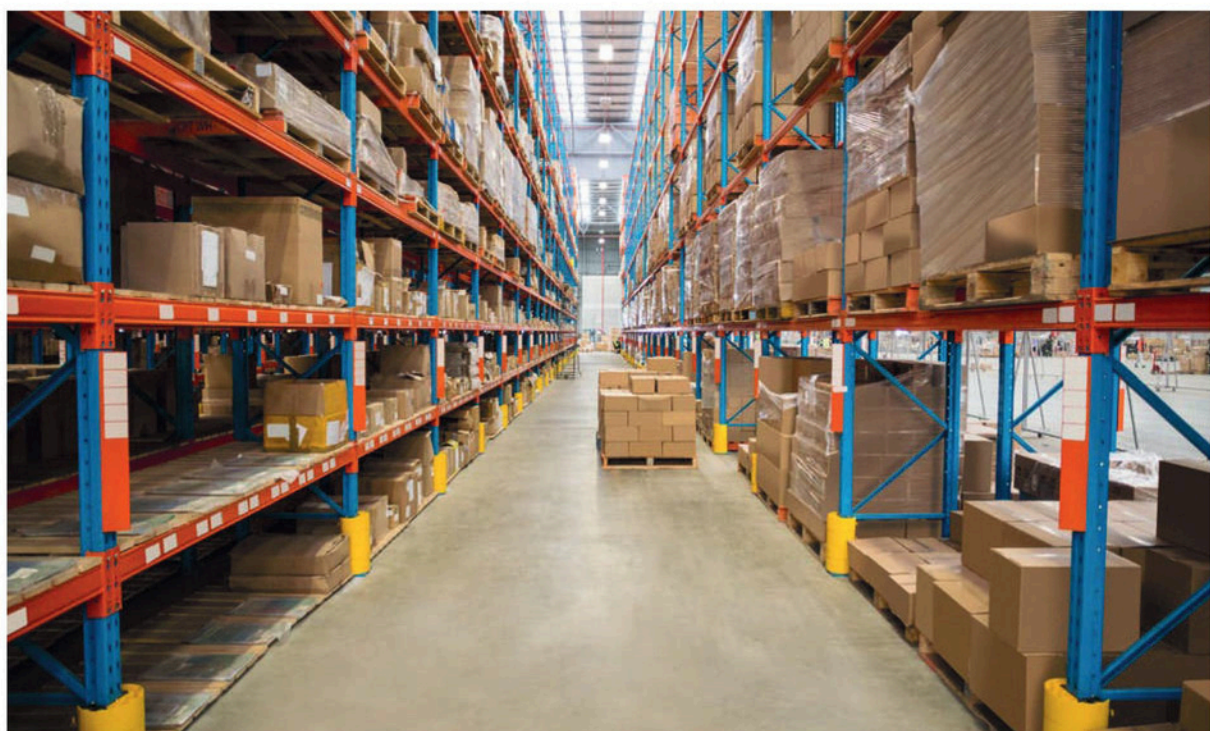
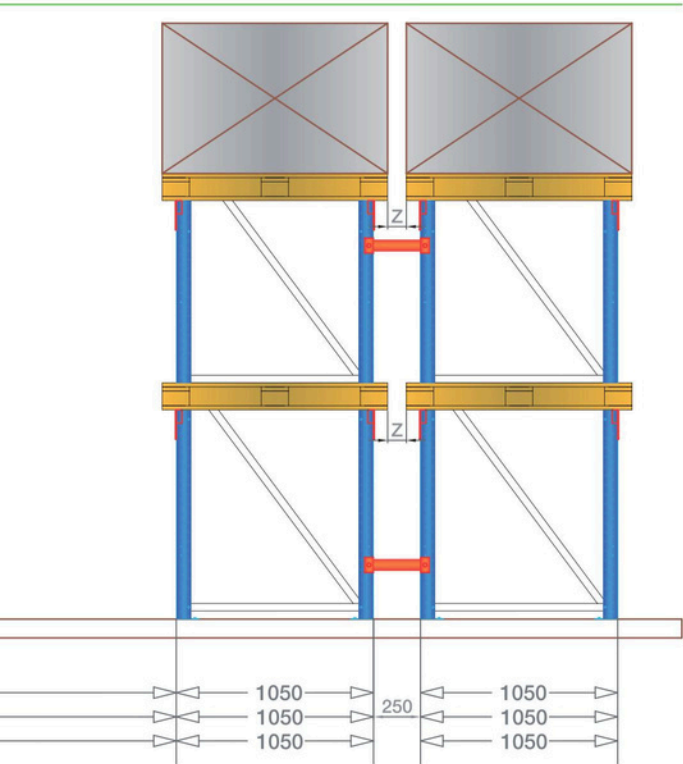


STORAGE PLAN

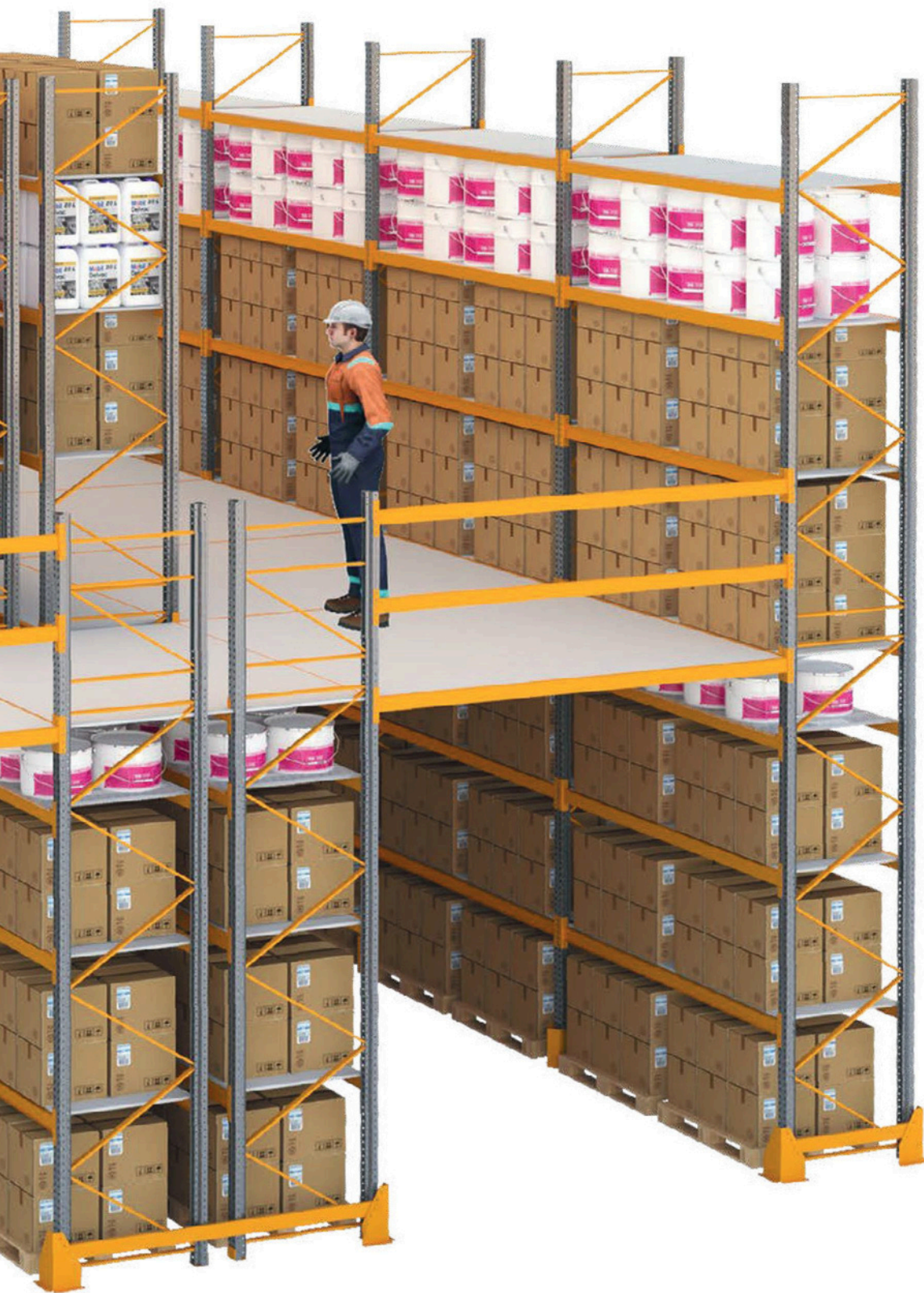


TYPES OF ACCESSORIES





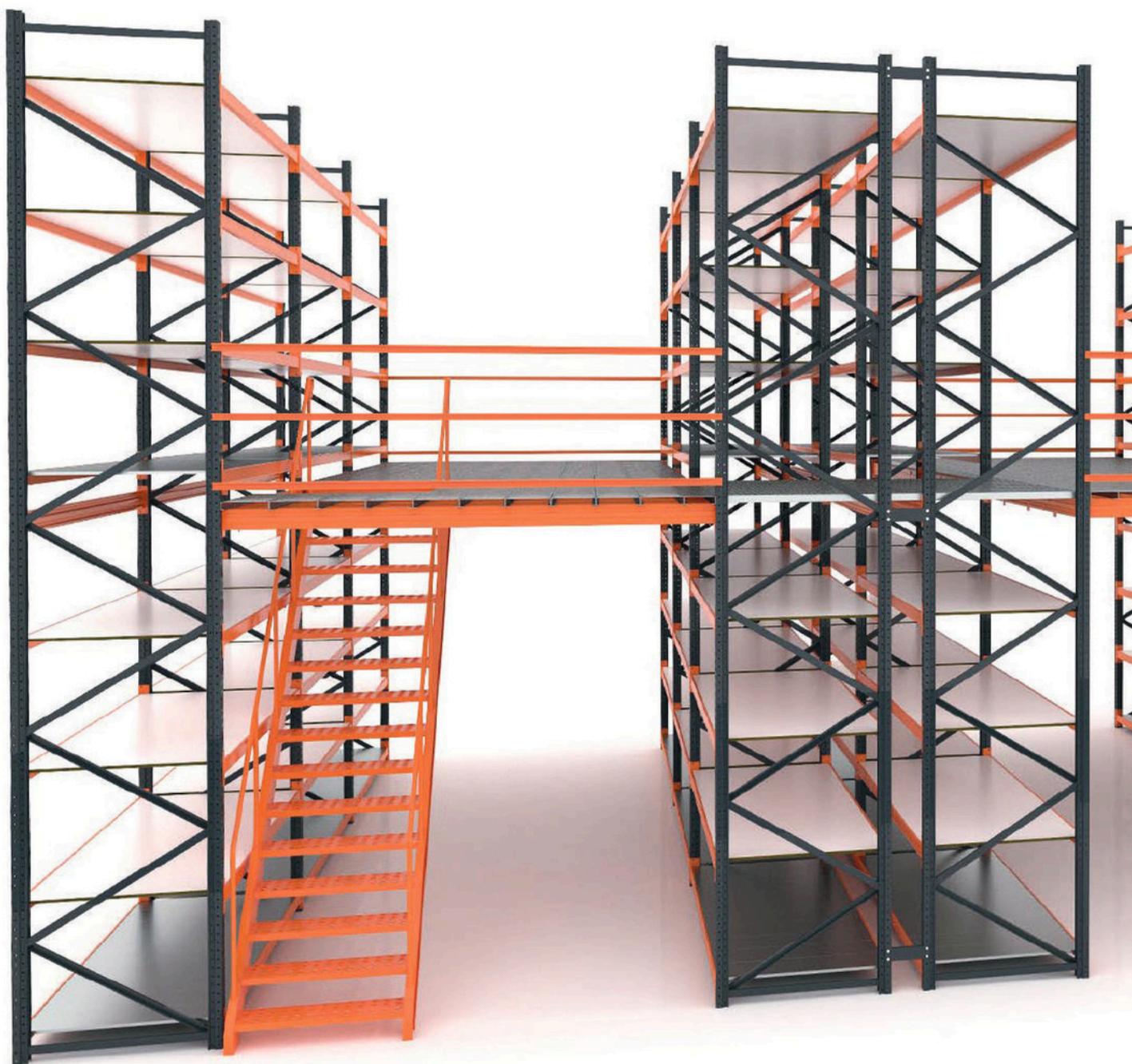




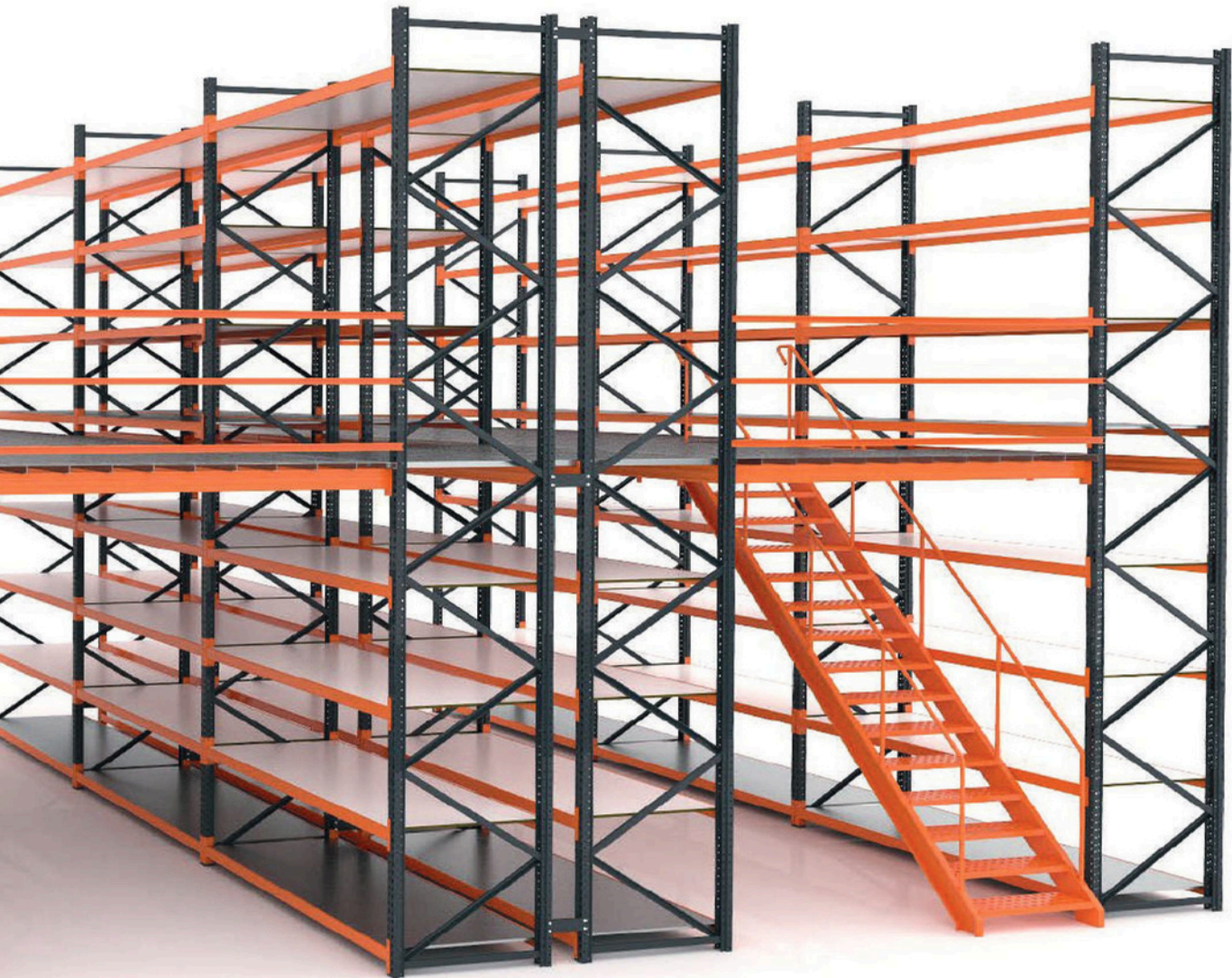
MEZZANINE SOLUTION

Factories : **R.B.S & .Artilaser**. Address : Mahdia Road Km13 -3054 Sfax // Website : www.re-yona.com

Phone : (+216) 22 184 155 / (+216) 29 752 056 // E-mail : artilaser@gmail.com / contact@artilaser.tn



MEZZANINE SOLUTION



Factories : **R.B.S & .Artilaser**. Address : Mahdia Road Km13 -3054 Sfax // Website : www.re-yona.com

Phone : (+216) 22 184 155 / (+216) 29 752 056 // E-mail : artilaser@gmail.com / contact@artilaser.tn

Drive-in Drive-thru Pallet Racks



General Characteristics Of Drive-In Pallet Racks And Drive-Thru Racks (Fifo / Lifo)

This system is intended for storing homogeneous products, with a large number of pallets per reference.

Both in terms of surface area and height, it is the best system to maximize the available space.

This type of installation consists of a set of racks that form internal loading aisles, equipped with guiding rails for the pallets.

The truck enter these internal aisles with the load raised above the level where it will be deposited.



The storage aisles have guiding rails on both sides, at the various levels where the pallets are placed.

The strength of the materials used in this type of racking allows for the storage of heavy-load pallets.

ADVANTAGES

- Maximum use of space: These racks make the most of both the available floor area and height, providing a higher storage capacity compared to conventional racks.
- Simple and low-cost : This is the simplest accumulation storage system, requiring the lowest investment.
- Customizable: The depth and height of the racks can be adjusted based on the customer's needs and the characteristics of the stored goods.
- One or two aisles: It is possible to operate with a single aisle (loading and unloading from the front) or two aisles (loading from the front aisle, unloading from the rear aisle).
- Guiding elements: Reyona accumulation pallet racks are equipped with accessories that facilitate forklift movements and proper pallet positioning.
- Energy savings: Due to the compact design, the area to be refrigerated in cold or freezer rooms is reduced.
- Easy stock management: Each aisle is dedicated to a single SKU, simplifying stock control and management.
- Different types of pallets: The racking systems are suitable for storing pallets of various weights and sizes.



AUTOMATIC & SEMI-AUTOMATIC RACKING



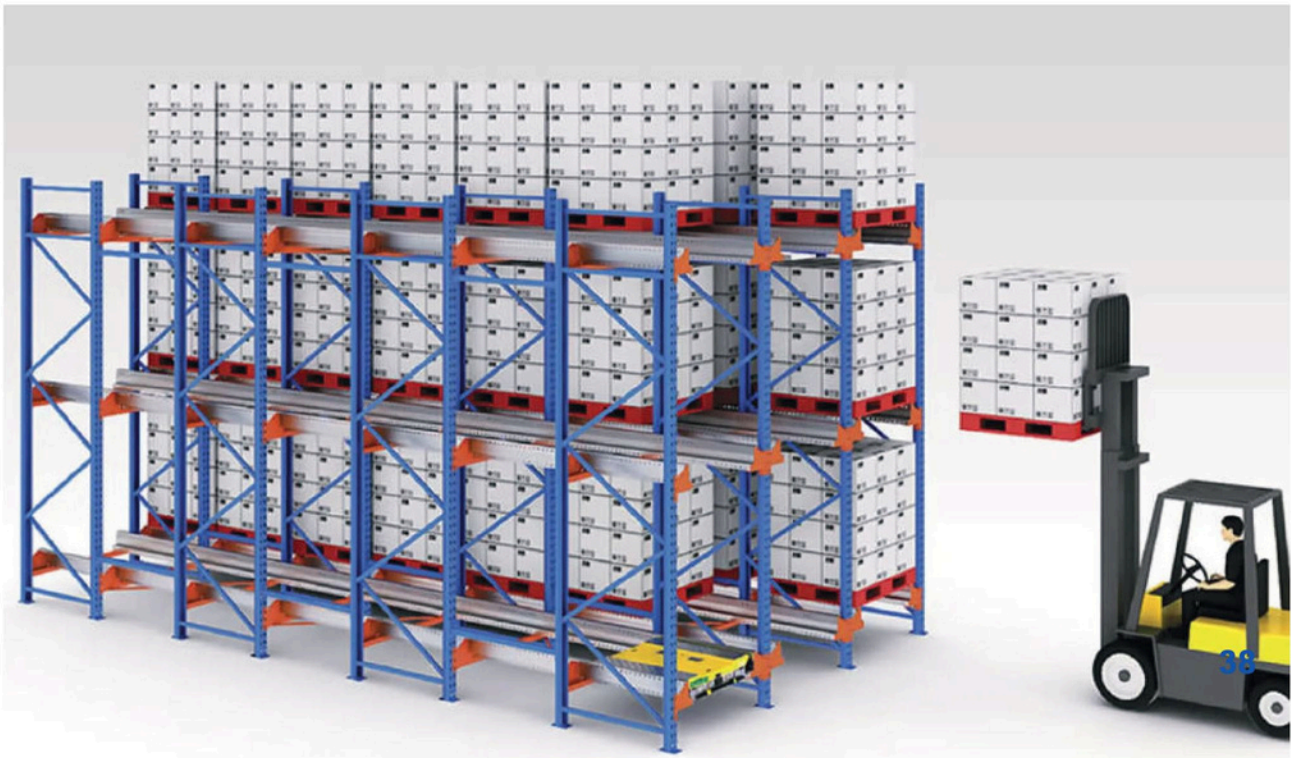
Optimize Your Warehouse With The Pallet Shuttle,
an innovative storage solution!

This system utilizes a motorized shuttle to load and unload pallets within the racks, whether using FIFO (First In First Out) or LIFO (Last In First Out), ensuring efficient stock management.

Moved by handling equipment such as stacker cranes, the shuttle facilitates the transfer of pallets between entry and exit points and storage channels. This approach maximizes the use of available space while increasing the flow of incoming and outgoing goods.

With its fast, reliable, and safe design, the shuttle operates directly within the storage channels to swiftly perform stock placement and retrieval operations, providing an ideal solution to enhance your warehouse's capacity and productivity.





DYNAMIC RACKING SYSTEM



General Characteristics of the Dynamic Racking System

It is the ideal solution if you are looking to revolutionize your logistics.

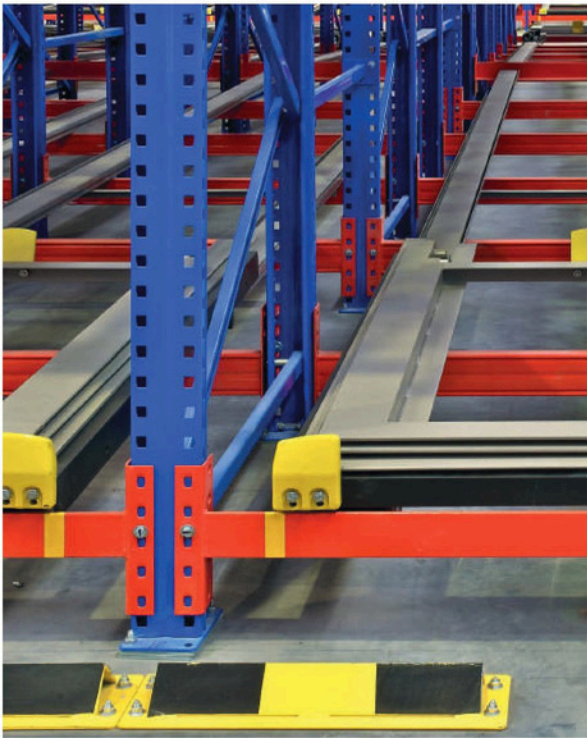
The dynamic racking system consists of metal frames and slightly inclined roller tracks, facilitating the perfect entry and exit of materials.

Goods are deposited at one end, then driven by gravity toward the opposite end, which opens into the exit aisle.

Thus, this system ensures perfect product rotation, avoids interference in restocking and picking tasks, and accelerates order preparation.

This solution allows you to maximize the use of your storage space while reducing not only handling time but also resources.





CANTILEVER RACKING



General Characteristics Of
Cantilever Racking System

It is the ideal solution for long or variable-width loads, such as metalprofiles, tubes, moldings, wood panels, metal or plastic sheets...

It consists of a very simple structure made up of columns and rows of cantilever arms for placing the load.

Cantilever racking is simple, strong, and easy to configure, adapting to different heights and types of goods.

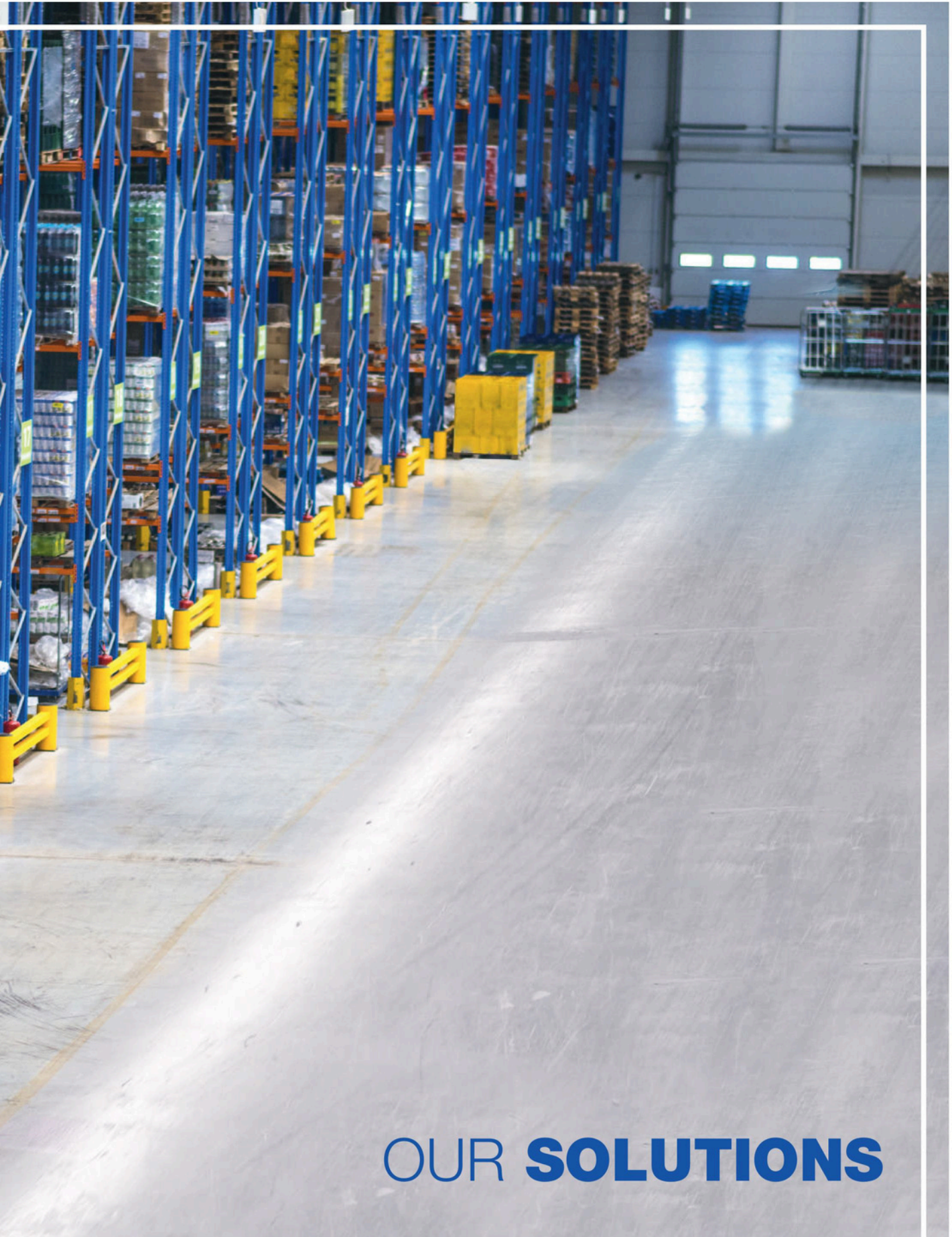




Factories : **R.B.S & .Artilaser**. Address : Mahdia Road Km13 - 3054 Sfax // Website : www.re-yona.com

Phone : (+216) 22 184 155 / (+216) 29 752 056 // E-mail : artilaser@gmail.com / contact@artilaser.tn





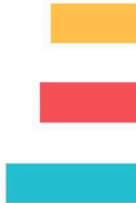
OUR **SOLUTIONS**

Factories : **R.B.S & .Artilaser**. Address : Mahdia Road Km13 -3054 Sfax // Website : www.re-yona.com

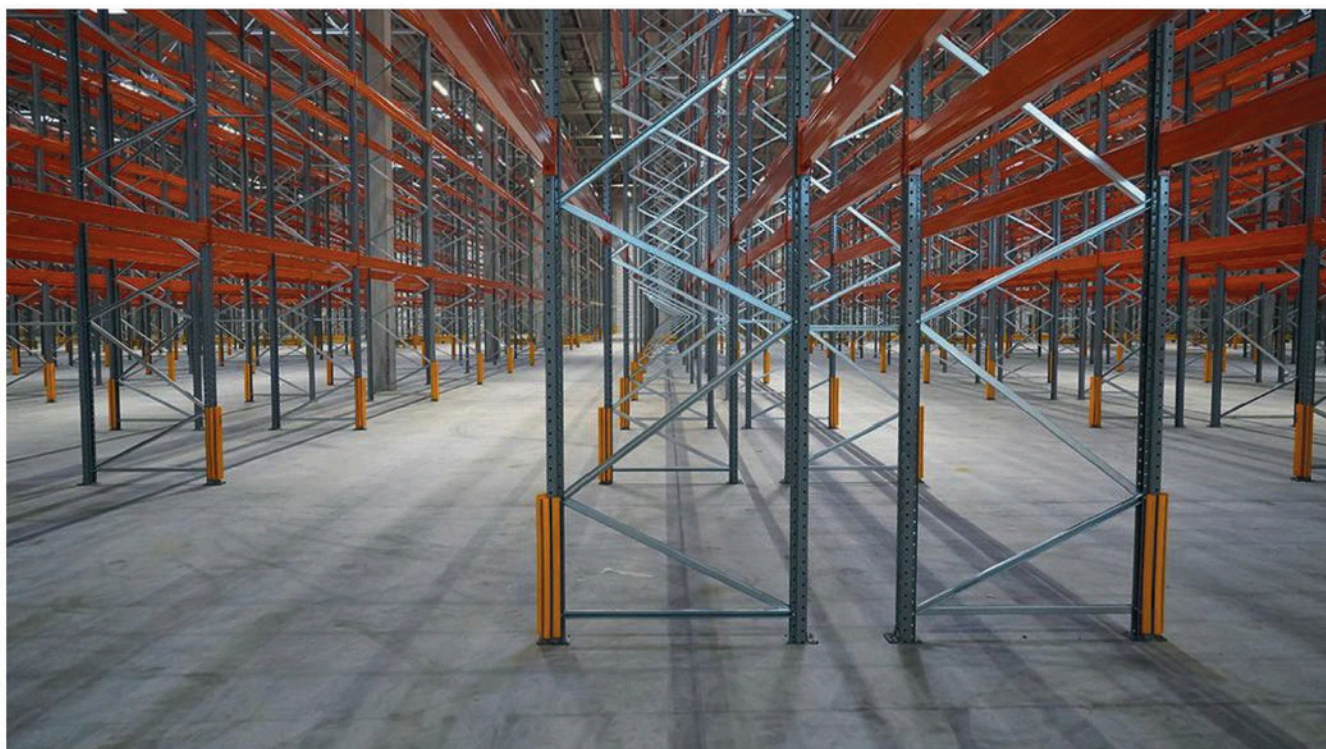
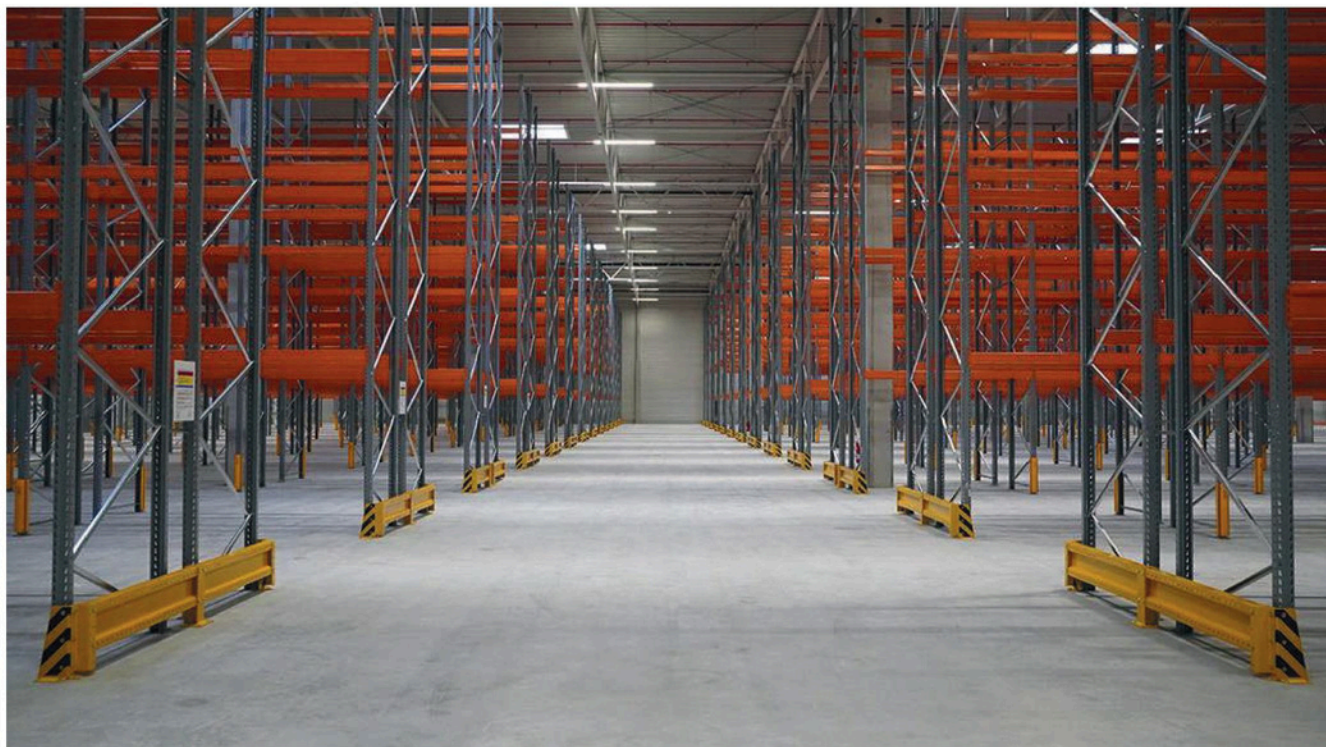
Phone : (+216) 22 184 155 / (+216) 29 752 056 // E-mail : artilaser@gmail.com / contact@artilaser.tn

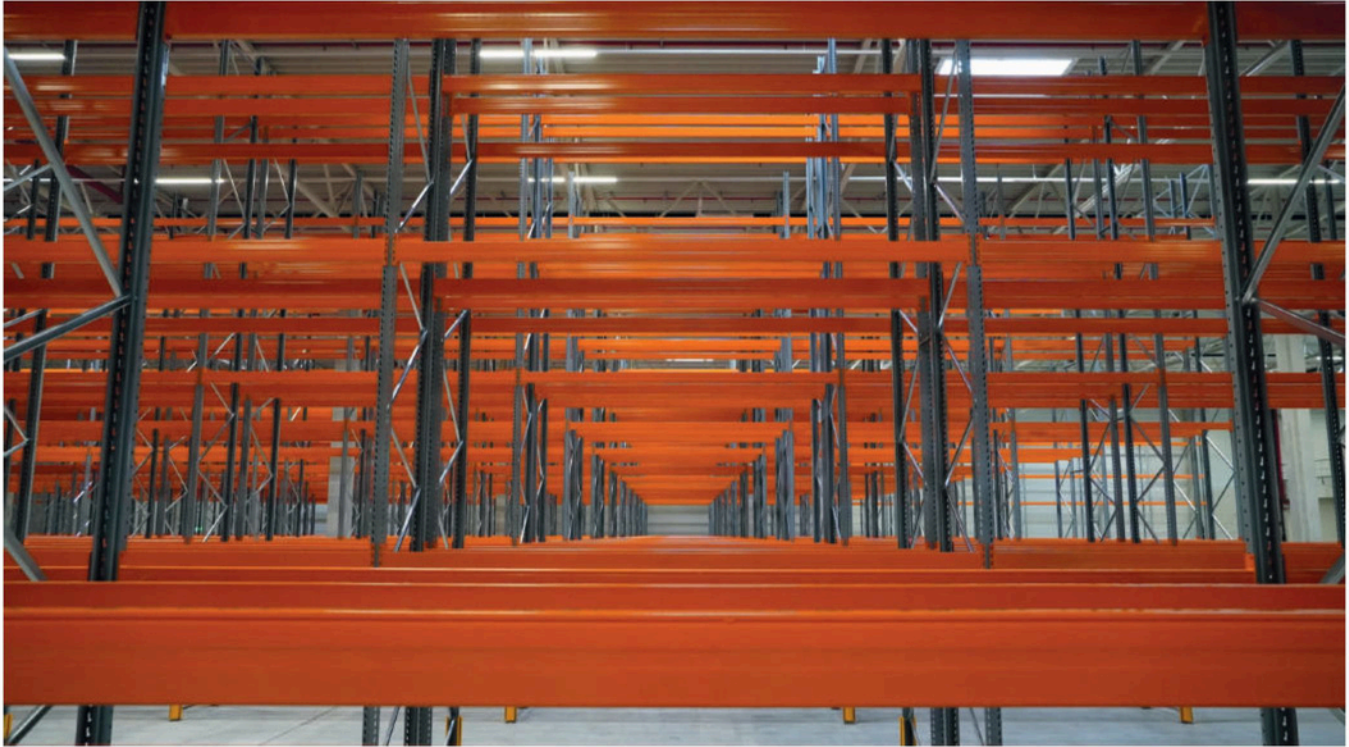
OUR ACHIEVEMENTS





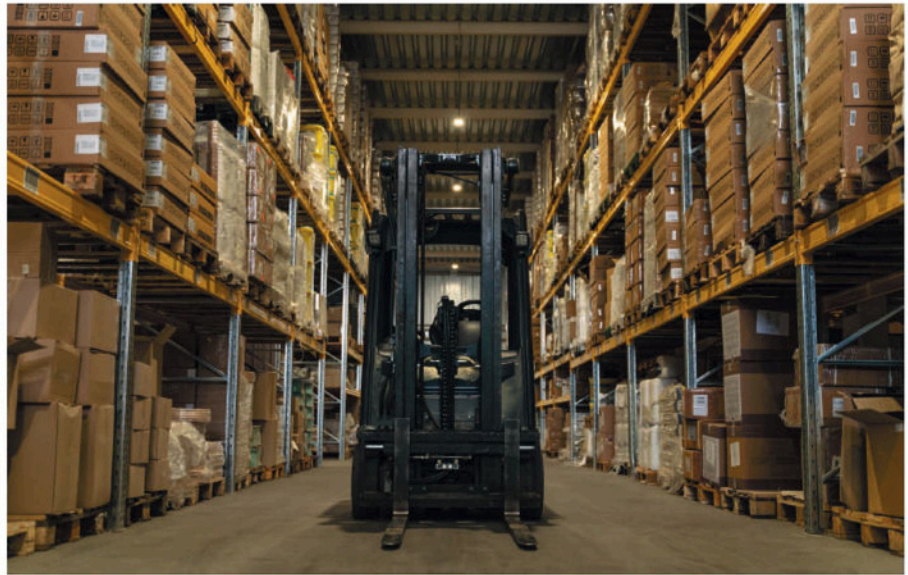
OUR ACHIEVEMENTS





OUR ACHIEVEMENTS



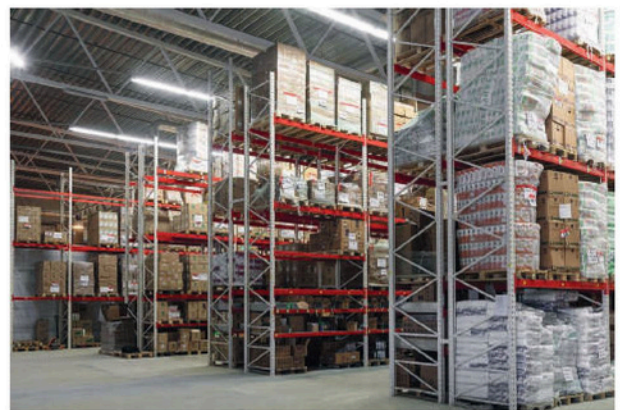
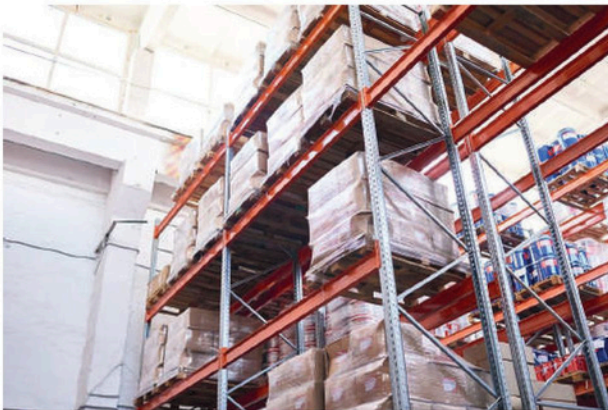


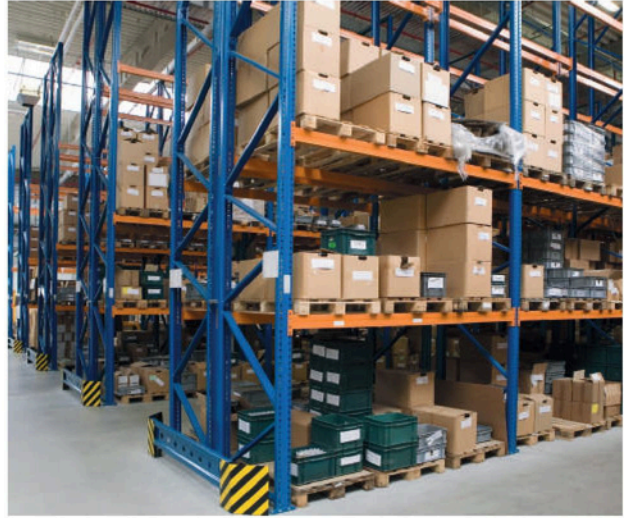
OUR ACHIEVEMENTS



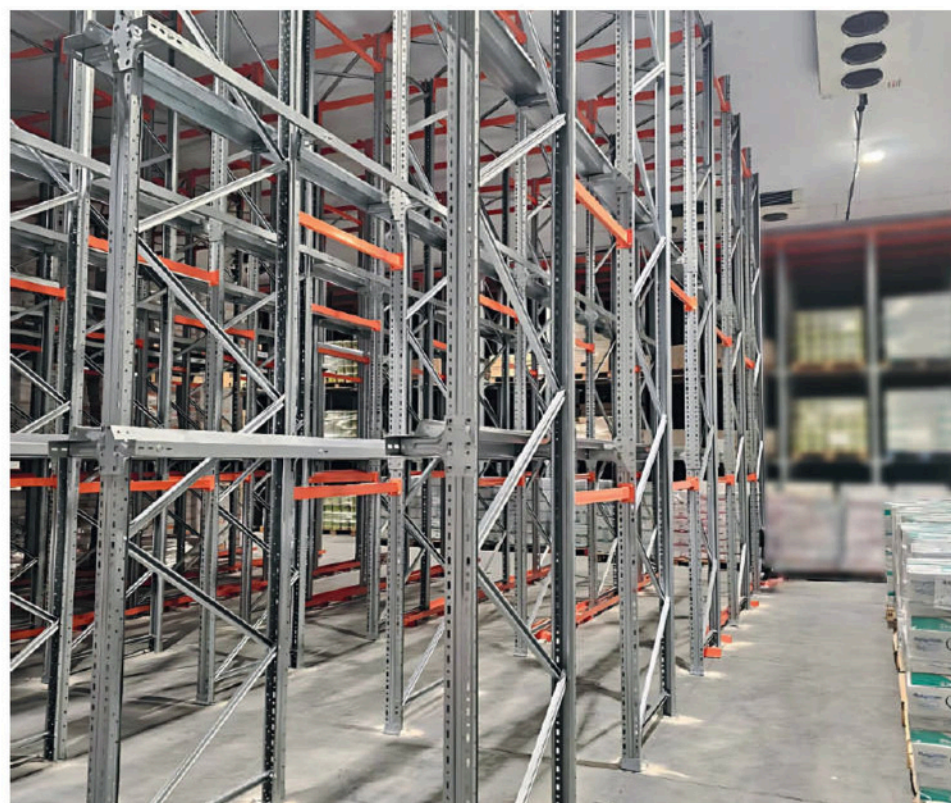
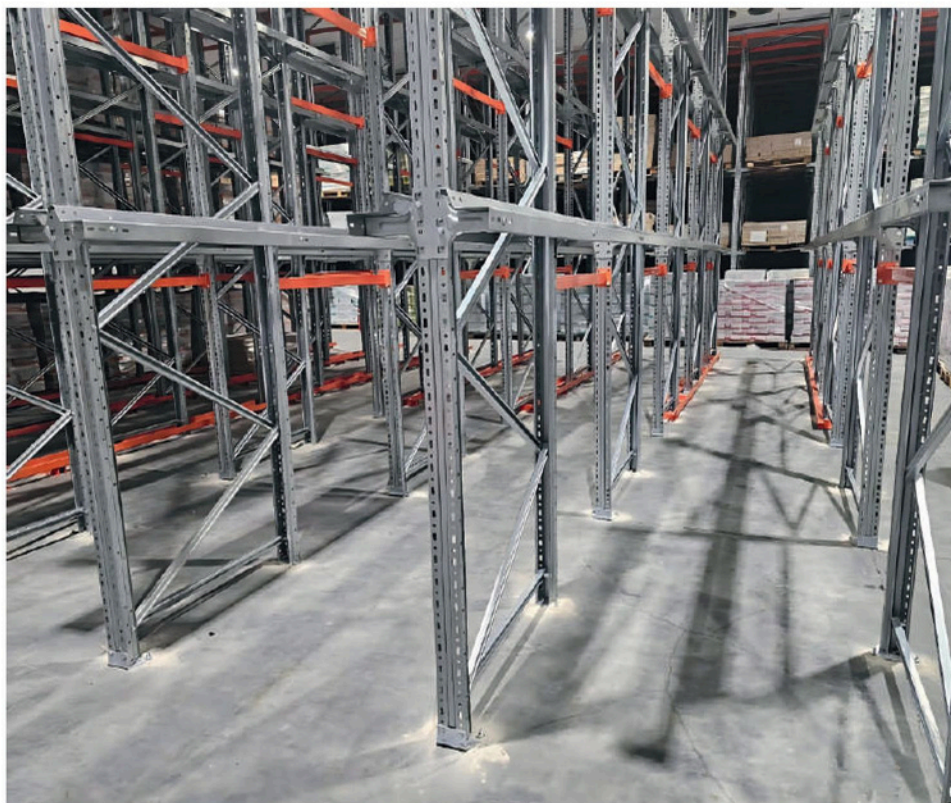


OUR ACHIEVEMENTS





OUR ACHIEVEMENTS





Factories : **R.B.S & .Artilaser.** Address : Mahdia Road Km13 -3054 Sfax // Website : www.re-yona.com

Phone : (+216) 22 184 155 / (+216) 29 752 056 // E-mail : artilaser@gmail.com / contact@artilaser.tn

Certificat

Référentiel **ISO 9001:2015**

Enregistré sous le n° **01 100 2515632**

Titulaire du certificat:



ARTI-LASER
ROUTE MAHDIA KM 13
3054 SFAX
Tunisie

Domaine de validité: Conception, fabrication et installation de solution de rayonnage industriel, commercial et autres

Par l'audit, la conformité aux exigences de la norme ISO 9001:2015 a été démontrée.

Validité: Ce certificat est valable du 06.01.2026 jusqu'au 05.01.2029.

Certification initiale: 2026

09.01.2026

TÜV Rheinland Cert GmbH
Am Grauen Stein · 51105 Köln

OUR PARTNERS



MONOPRIX



FLO



Lufian

women'ssecret





REYONA

CONCEPTION • RAYONNAGE • AGENCEMENT • INSTALLATION

Your Project Partner

